

Release Notes

Product

- HUB30
- HUB35-EXT35 KIT

System Requirements

- CP10 G2:
 1. 0.0.2800.70 (HUB30 support)
 2. 0.0.2800.80 (HUB35-EXT35 KIT support)
- BYOM Controller:
 1. 1.1.1005.0 (HUB30 support)
 2. 1.1.1009.0 (HUB35-EXT35 KIT support)
- Room Management (Windows)
 1. 2.3.1015.0 (to support HUB30)
 2. Please refer to the Room Management final release notes for the corresponding version. (HUB35-EXT35 KIT support)
- Room Management (macOS)
 1. 2.3.1015.0 (to support HUB30)
 2. Please refer to the Room Management final release notes for the corresponding version. (HUB35-EXT35 KIT support)

Supported Peripherals (Room Control)

- TR Series: TR211, TR315, TR315N, TR335, TR335N, TR311HWV2, TR313V2, TR323NV2, TR333V2, TR535N, TR323V2, TR535, TR615,
- PTZ Series: PTZ211, PTZ231, PTZ310UV2, PTZ310UNV2, PTZ330UV2, PTZ330UNV2
- PTC¹ Series: PTC310HWV2, PTC310UV2, PTC320UV2, PTC320UNV2, PTC330UV2
- CAM/VB Series: CAM520 Pro 3, CAM550, VB342 Pro, CAM570, VB350
- FONE Series: FONE540, FONE700

Supported Peripherals (ConnectAI)

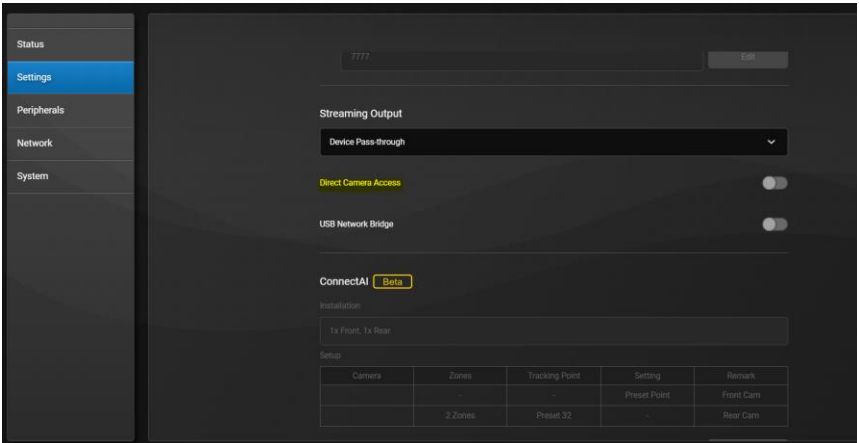
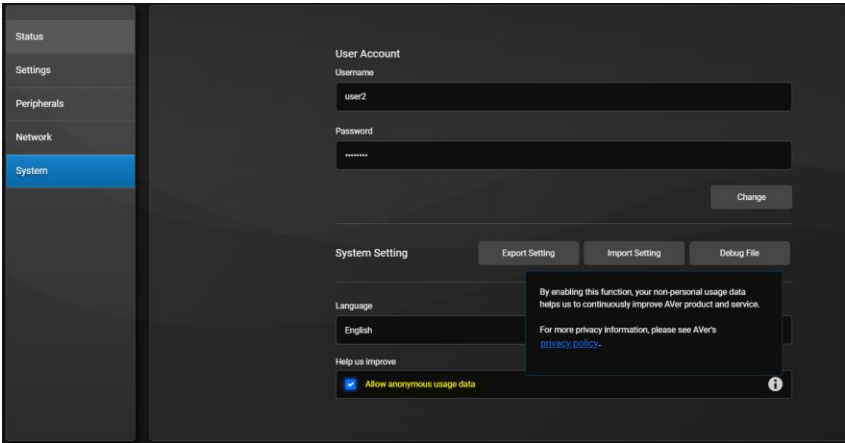
- TR Series: TR211, TR315, TR315N, TR335, TR335N, TR311HWV2, TR313V2, TR323NV2, TR333V2, TR535N, TR323V2, TR535, TR615,
- PTZ Series: PTZ211, PTZ231, PTZ310UV2, PTZ310UNV2, PTZ330UV2, PTZ330UNV2
- PTC¹ Series: PTC310HWV2, PTC310UV2, PTC320UV2, PTC320UNV2, PTC330UV2
- CAM Series: CAM520 Pro 3, CAM550, CAM570

Note:

1. PTC Series is only available in non-USA regions.

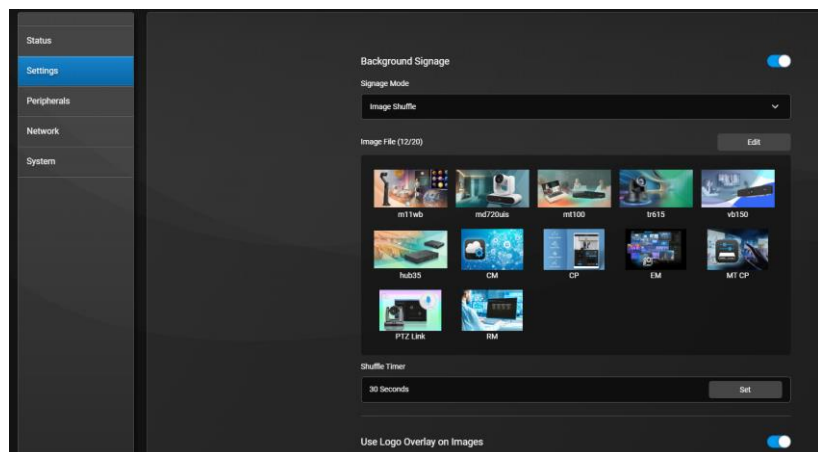
Revision History

Firmware Version	Region	Release Date	Model
0.0.0000.12	Global	2025/6/6	HUB30
0.0.0000.18	Global	2025/9/15	HUB30, HUB35-EXT35 KIT
0.0.0000.28	Global	2026/3/30	HUB30, HUB35-EXT35 KIT

Version	0.0.0000.28
Release Date	2026/3/30
New Feature	<p>1. Support "Direct Camera Access".</p> <ul style="list-style-type: none"> • Configuration: Navigate to Go to HUB > Settings and set the Streaming Output to "Device Pass-through." • Enabling this feature puts the HUB30 or HUB35-EXT35 KIT into bypass mode. All connected peripherals will be directly exposed to and managed by the host PC as if they were plugged in directly.  <p>2. Add "Allow anonymous usage data".</p> <ul style="list-style-type: none"> • Configuration: Navigate to Go to HUB > System -> Help us improve. • By enabling this function, your non-personal usage data will be collected to help us to continuously improve AVer product and service. For more privacy information, please see AVer's privacy policy. 

3. Support "Background Signage".

- Configuration: Navigate to Go to HUB > Settings -> Background Signage.
- Users can now customize the idle screen on the HUB30 and HUB35-EXT35 KIT. When no input source is detected, the system will display user-uploaded images (supporting logo overlays) or video, transforming the display into a functional Digital Signage terminal.



4. [ConnectAI] Setup 1: Allow options for Smart Comp, Smart Framing, Preset X for Front Cam

- Configuration: Navigate to Go to HUB > Settings -> ConnectAI

5. [ConnectAI] Presenter Mode

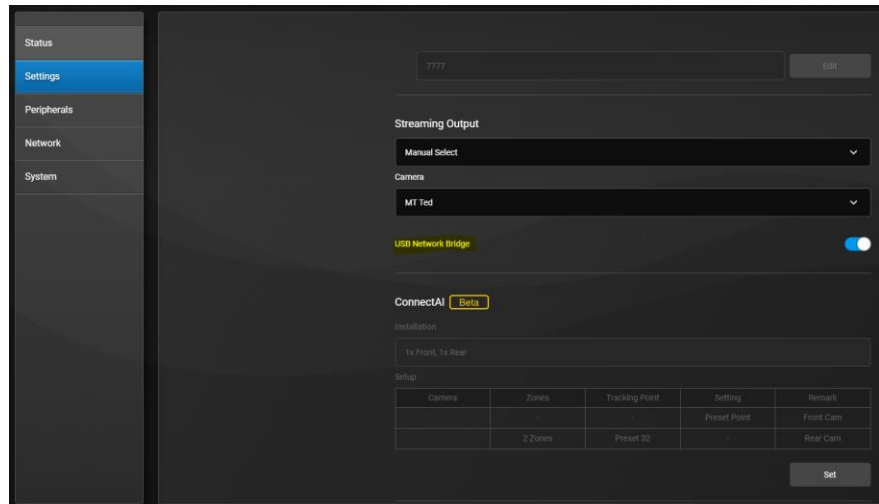
- Configuration: Navigate to Go to HUB > Settings -> ConnectAI -> Presenter Mode toggle on

6. Support Audio via AVer Room Management (RM) screenshare

7. Support IP connectivity for AVer audio devices (FONE700).

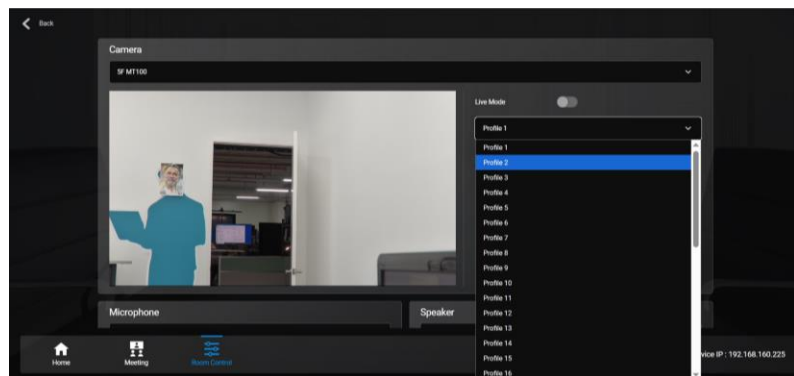
8. Provide network to connected PC via USB-C or USB-B.

- Configuration: Navigate to Go to HUB > Settings -> USB Network Bridge.
- System requirements: Windows 10 (1903 later) macOS (10.11 later).
- By enabling this function, HUB series shares its wired ethernet connectivity with the connected USB host. This allows the connected PC to access the network directly through the HUB's physical uplink, eliminating the need for a separate LAN cable for the laptop.



9. Support MT300/100 as input peripheral via IP.

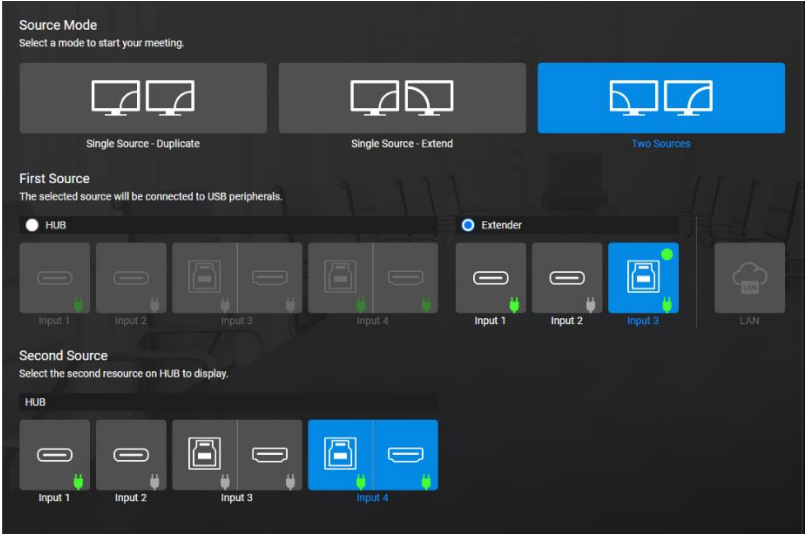
- MT300 and MT100 devices can now be automatically searched and added as video input sources via IP (RTSP).
- Support Live Mode or switch up to 36 profiles of MT on HUB.



Improvements

1. Able to showcase connection source via UI indicator.

- Green Plug: Indicates that a source is successfully connected to the HUB's input port.
- Green Plug + Green Dot: Indicates that the source is connected and is currently selected as the Active Host.

	 <p>2. Support TR535, TR323V2, TR615 for Room Control and ConnectAI.</p> <p>3. Support wide-angle lens of TR535.</p>
<p>Notes and Recommendations</p>	<ul style="list-style-type: none"> • [Enabling Single Source – Extend Mode] <ol style="list-style-type: none"> a. To enable Single Source – Extend mode, ensure the DisplayLink driver is installed on your connected PC or laptop. You can download the driver from the Synaptics website. b. System requirements: <ul style="list-style-type: none"> • Windows 10 or later • macOS 13.5 or later • DisplayLink driver compatible with your version of Windows or macOS • Note: To download the latest or legacy drivers, visit the Synaptics website. Installing a newer version will overwrite the existing one. c. When installing DisplayLink driver, screen sharing may be briefly unavailable and resumes in about 3 minutes. • [ConnectAI]: To optimize Smart Composition image quality when using ConnectAI, it is recommended to zoom in using the camera’s optical zoom. This is expected to improve the Smart Composition results.
<p>Known Issue</p>	<ul style="list-style-type: none"> • When using “Manual Select” or “ConnectAI” under Streaming Output with

CAM550/570/520 Pro3, streaming will not function if the camera is set to H.265.

Select H.264 on the camera to ensure proper operation.

- **[ConnectAI]**: It is not recommended to set a projector screen as the tracking point area, as this may cause failures in enabling PiP layout switching.

Version 0.0.0000.18

Release Date 2025/9/15

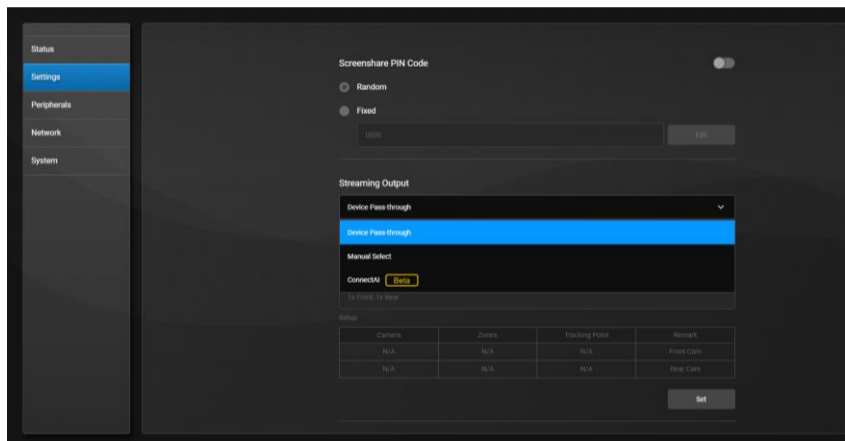
New Feature

1. Add **Streaming Output** option under **Homepage/Room Control** and **System/Settings**.

- Homepage/Room Control



- System/Settings

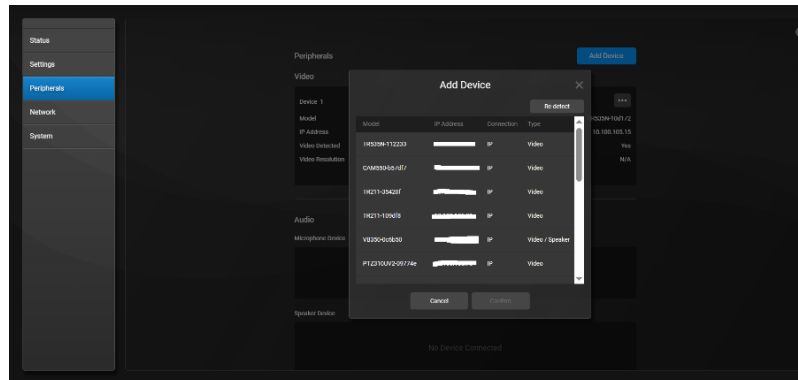


2. Supports IP connectivity for AVer video devices.

- When AVer video devices (e.g., cameras) are on the same LAN as HUB30/HUB35, they can be discovered using the **Add Device** feature under **System → Peripherals**. This enables HUB30/HUB35 to stream RTSP video to

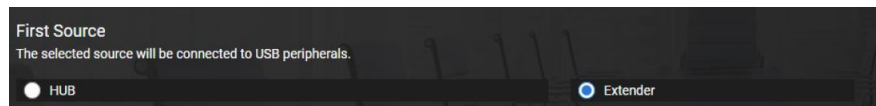
UVC.

- System/Peripherals/Add Device



3. Add **HUB** and **Extender** options under **Homepage** → **First Source**. This allows the system to switch between HUB and Extender as the primary input source. Note: switching may temporarily disconnect the display and require a short time to reconnect.

- Homepage/First Source



4. Supports AVer peripherals below for Room Control:
 - TR535N
 - PTC310HWV2, PTC310UV2, PTC320UV2, PTC320UNV2, PTC330UV2
 - CAM570, VB350, FONE700
5. Supports AVer peripherals below for ConnectAI:
 - TR535N
 - PTC310HWV2, PTC310UV2, PTC320UV2, PTC320UNV2, PTC330UV2
 - CAM570
6. Supports VISCA over IP/RS232 commands. Please refer to the user manual for detailed command information.

Improvements

1. Improved overall switching performance.
2. Reduced discovery time for AVer peripherals when using the Add Device feature.”
3. To better distinguish added AVer peripherals on HUB, the following improvements have been made:
 - a. When searching for AVer peripherals for the first time, each device will

	<p>be displayed with the name format: [Model Name]-[Last 6 digits of MAC Address].</p> <p>b. After successfully adding a device, users can manually rename it for easier identification and management.</p>
<p>Notes and Recommendations</p>	<ul style="list-style-type: none"> • [Enabling Single Source – Extend Mode] <ul style="list-style-type: none"> a. To enable Single Source – Extend mode, ensure the DisplayLink driver is installed on your connected PC or laptop. You can download the driver from the Synaptics website. b. System requirements: <ul style="list-style-type: none"> • Windows 10 or later • macOS 13.5 or later • DisplayLink driver compatible with your version of Windows or macOS • Note: To download the latest or legacy drivers, visit the Synaptics website. Installing a newer version will overwrite the existing one. c. When installing DisplayLink driver, screen sharing may be briefly unavailable and resumes in about 3 minutes. • [ConnectAI]: To optimize Smart Composition image quality when using ConnectAI, it is recommended to zoom in using the camera’s optical zoom. This is expected to improve the Smart Composition results.
<p>Known Issues</p>	<ul style="list-style-type: none"> • When using “Manual Select” or “ConnectAI” under Streaming Output with CAM550/570/520 Pro3, streaming will not function if the camera is set to H.265. Select H.264 on the camera to ensure proper operation. • [Wireless (LAN) Connection]: Currently, only video screen sharing is supported via Room Management software without connecting USB or HDMI cables. Audio is not supported at this time. • [ConnectAI]: It is not recommended to set a projector screen as the tracking point area, as this may cause failures in enabling PiP layout switching.

	<ul style="list-style-type: none"> During device firmware upgrades or downgrades, the system progress may occasionally appear stuck at 40%, even though the device status LED has already turned solid green. Refresh the device’s web interface to confirm that the firmware has been successfully updated. This issue is scheduled to be fixed in the next version.
Version	0.0.0000.12
Release Date	2025/6/6
New Feature	Initial release.
Improvements	Initial release.
Notes and Recommendations	<p>Screen Sharing</p> <p>1. Enabling Single Source – Extend Mode:</p> <p>To enable Single Source – Extend mode, ensure the DisplayLink driver is installed on your connected PC or laptop. You can download the driver from the Synaptics website.</p> <p>System requirements:</p> <ul style="list-style-type: none"> Windows 10 or later macOS 13.5 or later For detailed driver version information, please refer to the release notes on the Synaptics website. <p>2. Automatic Input Switching:</p> <p>After switching between modes (Single – Duplicate, Single – Extend, and Two Sources) or switching the two connected output displays, the system will automatically revert the input source to Input 1.</p> <p>Adding New Devices</p> <p>1. To add new devices to Room Control and ConnectAI for the first time, make sure the A/V devices are:</p> <ul style="list-style-type: none"> ○ Connected to USB-A 3 or USB-4 on the HUB30 ○ On the same LAN as the HUB30

	<p>ConnectAI</p> <ol style="list-style-type: none">1. It is recommended to enable ConnectAI before or after starting a video conferencing (VC) call. Avoid enabling or disabling ConnectAI during an active VC call.2. When ConnectAI is turned off, the input video source resolution will not be visible.3. To enable Smart Composition when there are six or fewer seated participants, ensure the video USB output is set to 4K. Otherwise, the system will default to Smart Framing.
<p>Known Issues</p>	<p>Screen Sharing</p> <ol style="list-style-type: none">1. When switching between the three source modes, please allow approximately 10 to 15 seconds for the transition to complete successfully.2. When using Single – Extend Mode, switching between two connected output displays during a video conferencing call may occasionally fail to automatically switch the shared content between the displays on the first attempt. Performance improvements are planned for a future release. <p>Wireless (LAN) Connection</p> <ol style="list-style-type: none">1. Currently, only video screen sharing is supported via Room Management software without connecting USB or HDMI cables. Audio is not supported at this time.2. When using a Mac to connect to HUB30 through Room Management with PIN Code enabled and set to Fixed, the PIN code entry window may occasionally fail to appear as expected.

Room Control

1. Adding new devices currently takes approximately 20 seconds. Performance improvements are planned for a future release.

ConnectAI

1. The image quality of Smart Composition with the front camera is currently not optimal and is expected to be improved in a future update.
2. It is not recommended to set a projector screen as the tracking point area, as this may cause failures in enabling PiP layout switching.